

FEATURES OF THE SC23

- Time saving
- Easy to operate
- Safety wire with carbine hook
- Universal - exchangeable jaws
- Automatic spring return
- Flexible holding block
- Quick coupling included
- Max. load 2.3 ton
- Max. working pressure 70 MPa
- Compression length 250 mm



HYDRAULIC SPRING COMPRESSOR SC23

The hydraulic spring compressor is a time saving and powerful tool. Uses exchangeable jaws in order to suit most car models.

■ Information



Universal, simple and safe - these were the major criteria used during the development of the SC23. The tool uses common jaws, which in many cases are already a part of the workshop equipment. The universal design makes the tool upgradable to fit many car models.

■ Functionality



Equipped with a quick coupling, the SC23 is easy to connect to a hydraulic pump. The flexible holding block allows the tool to be placed in a suitable angle on a work bench. For a safe operation, the SC23 is also equipped with a safety wire for securing the spring.

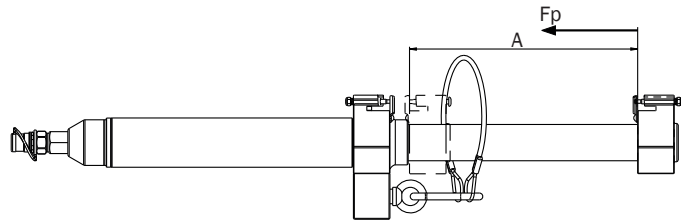
■ Usability



Due to enormous strong forces, working with springs is often both complicated and risky. With the REHOBOT hydraulic spring compressor, this work can be carried out much safer and at the same time, save time. The SC23 is a great asset for any workshop

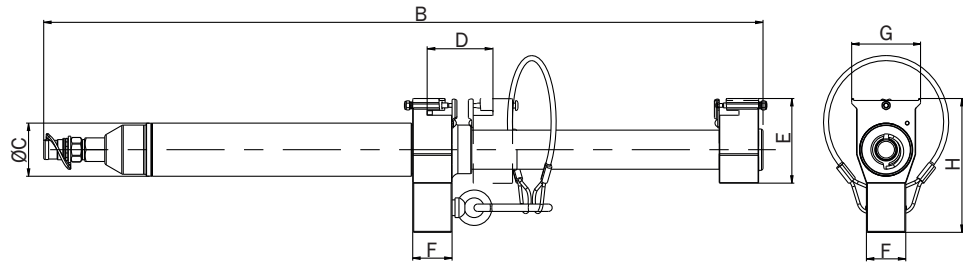
SC23 - PERFORMANCE

	SC23
Stroke/compression length, A	250 mm / 9.8 in
Pulling force, Fp	23 kN / 2.3 ton
Max. working pressure	70 MPa / 10000 psi

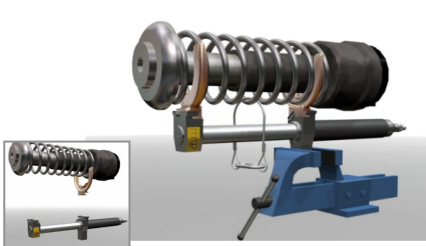


SC23 - MEASUREMENTS

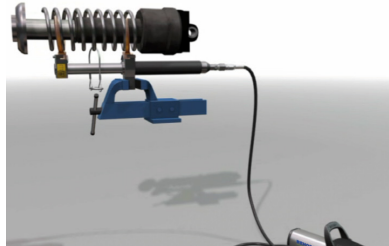
	SC23
B	731 mm / 28.8 in
C	54 mm / 2.1 in
D	73 mm / 2.9 in
E	86 mm / 3.4 in
F	40 mm / 1.6 in
G	70 mm / 2.8 in
H	136 mm / 5.4 in
Weight	7.5 kg / 16.5 lbs



SC23 - SEQUENCE OF OPERATION



Step 1
Unmount the spring and choose the proper pair of jaws, dependent on the spring type and outer diameter.



Step 2
Mount the jaws on the SC23 hydraulic spring compressor. Secure the spring with the securing wire. Connect the SC23 to the hydraulic pump and start compressing the spring.



Step 3
When the spring is compressed, you can begin disassembling the strut.



Because the SC23 hydraulic spring compressor uses common jaws, those jaws are in most cases already part of the workshop equipment.

Adapting the hydraulic spring compressor for different car models, means therefore simply changing the pair of jaws! Jaws are available for many different car models.

NOTE! All REHOBOT Data Sheets uses metric ton.
1 metric ton = 0.98 long ton = 1.10 short ton.

SC23 - JAWS

TYPE	Spring size - Ø	Weight (pair)
KL-1500SP	70-100 mm/2.8-3.9 in	1.1 kg/2.4 lbs
KL-1510SP	80-165 mm/3.1-6.5 in	1.5 kg/3.3 lbs
KL-1520SP	155-195 mm/6.1-7.7 in	1.9 kg/4.2 lbs

Sold in pairs



Supplied with plastic protective inserts.



SC23 - TABLE OF CONTENTS

TYPE	
SC23	Spring compressor tool only - no jaws included
SC23-12	Spring compressor tool with KL-1510SP and KL-1520SP included

SC23 - PUMP ALTERNATIVES

Air driven pump - for more comfort	Hand pump - more portable
	
<p>PP70B-1000</p> <p>PP70B-1000/LS201 (2 m hose, female quick coupling and swivel)</p> <p>PP70B-1000/LS250 (2.5 m high flex hose, quick coupling and swivel)</p>	<p>PHS70-1000</p> <p>PHS70-1000/LS201 (2 m hose, female quick coupling and swivel)</p> <p>PHS70-1000/LS301 (3 m hose, female quick coupling and swivel)</p> <p>PHS70-1000/LS250 (2.5 m high flex hose, quick coupling and swivel)</p>

ORDER INFORMATION

Designation	SC23	SC23-12	KL-1500SP	KL-1510SP	KL-1520SP
Part number	45195	45196	44542	44543	44544

Designation	PP70B-1000	PP70B-1000/LS201	PP70B-1000/LS250	PHS70-1000	PHS70-1000/LS201	PHS70-1000/LS301	PHS70-1000/LS250
Part number	49300	49306	49307	44400	44414	44419	44417

SC23 - RECOMMENDED JAWS FOR SOME CAR MODELS

Brand	Model	Jaws		
		1500	1510	1520
Alfa Romeo	147	*		
	156	*		
	general models		*	*
Audi	80, A4	*		
	100, 200, A6			*
	general models		*	
BMW	3-series (E36) Z3, X3			*
	general models	*	*	
Chrysler	Stratus	*		
	300M, Neon, Vision, Wrangler			*
	general models		*	
Citroen	AX, C15, C2, C3, Saxo, Xsara, ZX		*	
	Berlingo, Evasion, Jumpy			*
Daewoo	Matiz	*		
	Lanos, Nubira		*	
Daihatsu	Cuore, Sparcar	*		
	general models		*	
Fiat	Panda	*		
	general models		*	*
Ford	Escort, Fiesta, KA, Orion, Puma	*		
	general models		*	
	Galaxy, Mondeo, Probe			*
Honda	Accord, CR-V, Legend, Shuttle, Prelude		*	
	Civic, Concerto, Stream			*
	general models	*		
Hyundai	Accent, Atos		*	
	Coupe, Lantra			*
Kia	Pride	*		
	Clarus			*
	general models		*	
Lada	Battic, Samara	*		
	general models		*	
Lancia	Y10, Y, δ (Delta), Thema, κ (Kappa)		*	
	general models			*
Mazda	121, 6, 929, MX5, Xedos	*		
	626, MX3, MX6, Xedos			*
	general models		*	
Mercedes	A-Class, Smart, Vaneo	*		
	M-Class		*	
	Viano			*
Mitsubishi	Carisa, Colt, Eclips, Galant	*		
	Colt, Galant, Lancer, Sigma, Space Wagen		*	
	general models			*

Brand	Model	Jaws		
		1500	1510	1520
Mini	Cooper	*		
	Cooper			*
Nissan	Micra, Primera	*		
	general models		*	*
Opel	Ascona C, Monza, Omega B, Rekord E, Senator, Sintra			*
	general models RA	*		
	general models		*	
Peugeot	104, 205, 305, 307, 306, 309, 405, Break		*	
	106, 206, 307, 406, 505, 604, 605, 607, 806, Partner, J5			*
	911, Boxter			*
Porsche	general models		*	
	Espace, Laguna, Mégane, R11, R14, R25, R9			*
Renault	general models		*	
	400, 600, Austin Montego	*		
Rover	200, Freelander			*
	general models		*	
	900, 9-3, 9-5		*	
Saab	9000			*
	Cordoba, Ibiza, Toledo	*		
Seat	Alhambra			*
	general models		*	
Skoda	Fabia, Favorit, Felicia	*		
	Favorit, Felicia, Octavia		*	
Smart	Smart	*		
Ssang Yong	Korando, Musso		*	
Subaru	Justy, Legacy, Libero, Outback	*		
	1800, Legacy		*	
	Forester, Legacy, Outback, SVX			*
Suzuki	Alto, R+, Vitara, Wagon	*		
	Alto, Baleno, Jimmy, Swift		*	
	Baleno			*
Toyota	MR2	*		
	4-Runner, Avensis, Camry, Corolla, Previa, RAV4			*
	general models		*	
Volvo	S40, V40	*		
	general models		*	*
VW	Bora, Golf II, Golf III, Golf IV, Polo II, Polo II, Polo III, Jetta II, Scirocco II, Vento	*		
	Sharan, T5			*
	general models		*	