

SPECIFICATIONS

- High accuracy, class $\pm 0.2\%$ FS
- Pressure range: 0-100 MPa
- Wide range of pressure units
- Connection: external G1/4"
- Swivel rotating connection 330°
- Rubber protection around gauge
- Automatic shutdown
- Min./Max. display
- Long battery life
- Backlight on display
- Measuring ambient temperature
- Protective case included
- Large display for easy reading



Information



Pressure measurements is one of the most common solutions in the process- and production industry.

A digital gauge has several strengths, such as logging min./max values, easy to read display, high accuracy, easy to switch pressure units and can be configured to your specific configuration.

Powered by 3 AAA batteries or rechargeable battery pack. Batteries not included.

Functionality



Adapted for both fixed installation and as a hand-held instrument.

Simple push-buttons for navigation

Wide range of pressure units to suit every need

Wide variety of mounting accessories

Usability



For intermittent use in service applications.

- Almost all industrial processes
- Troubleshooting
- Industrial Bolting Applications
- Calibrations
- Mining Facilities
- Oil & Gas

REHOBOT Hydraulics AB

Postal address: P.O. Box 1107
631 80 Eskilstuna, Sweden
T: +46 (0)16-16 82 00 | F: +46 (0)16-13 93 16
E: info@rehobot.se | www.rehobot.se

REHOBOT Ltd.

Unit 6, Stechford Trading Estate, Lyndon Road, Stechford
Birmingham B33 8BU, UK
T: +44 121 789 77 07 | F: +44 121 789 68 66
E: info@rehobot.co.uk | www.rehobot.co.uk

REHOBOT Inc.

Unit #1 3980 W. Albany St.
McHenry IL 600 50, USA
T: +1 815 385 77 77 | F: +1 815 385 77 76
E: info@rehobot.us | www.rehobot.us

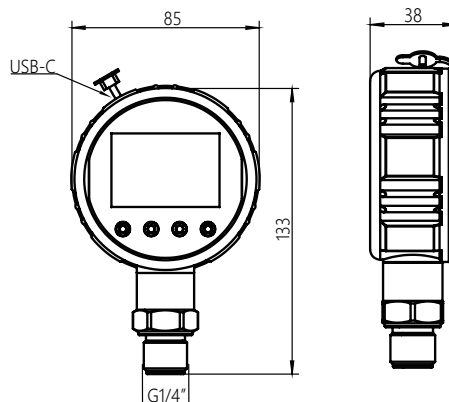
PERFORMANCE & DIMENSIONS

UNIT: mm

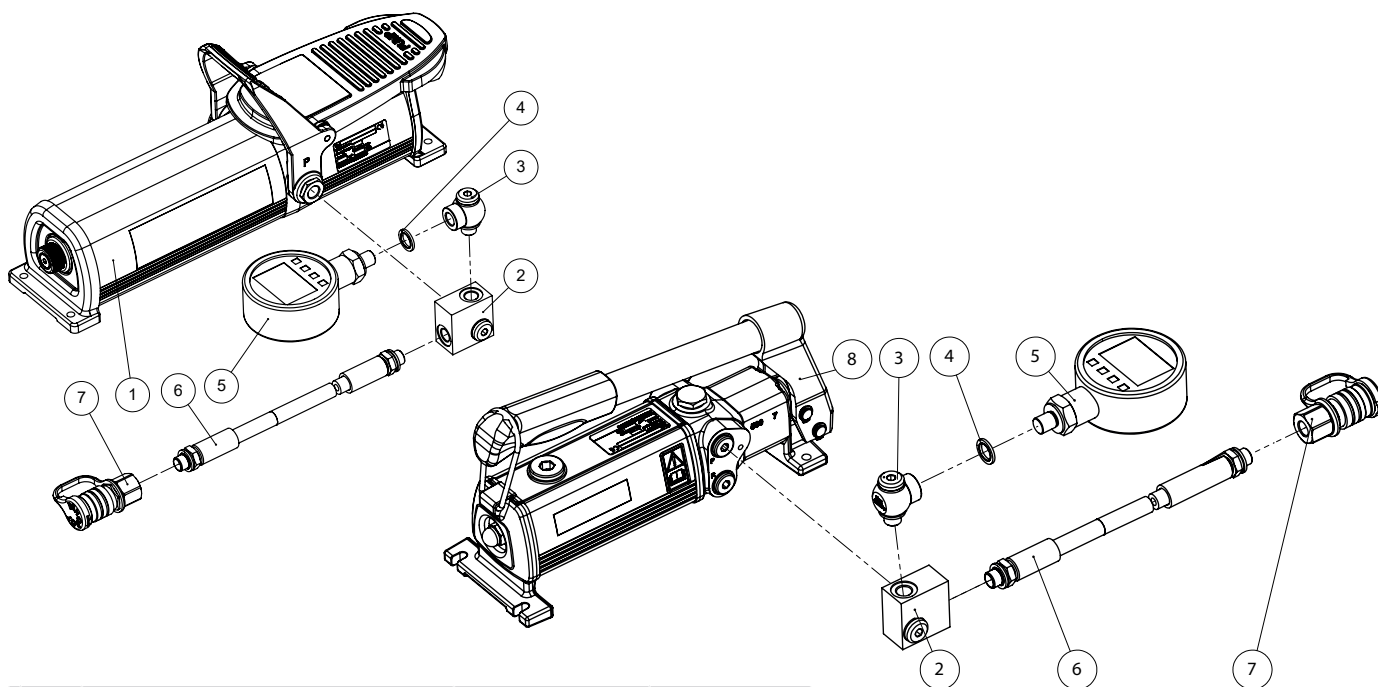
Designation	Item code	Working pressure	Class	Weight
DMT101 digital gauge	52868	100 MPa	± 0,2% FS	0,4 kg *

* batteries not included

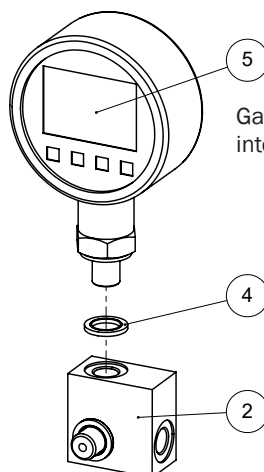
USB-C can be used for charging rechargeable battery pack.



INSTRUCTIONS ON MOUNTING



No.	Description	Part no.	Qty
1	PP70B-1000	49300	
2	AVM205 Manifold	52869	1
3	AB14 Banjo fitting	37898	1
4	Sealing ring	17009	1
5	DMT101 Digital gauge	52868	1
6	Hose (LSxxxES)		1
7	AQI7 quick coupling	46014	1
8	PHS70-300/1000/2400/4100W		1



Gauge can also be used directly into AVM203 manifold.

For working pressure: 100 MPa
For G1/4" thread, torque 50 Nm