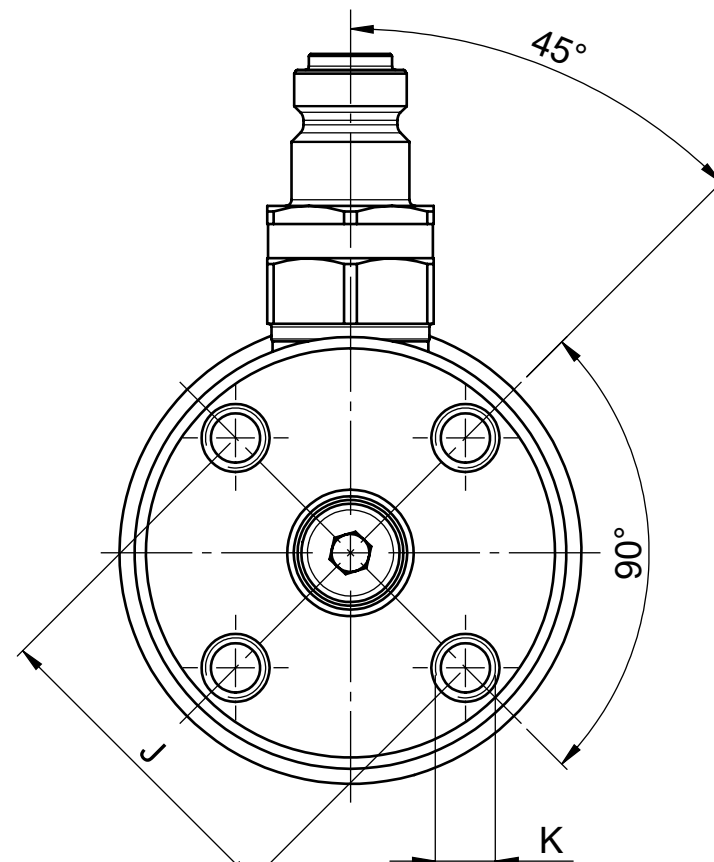
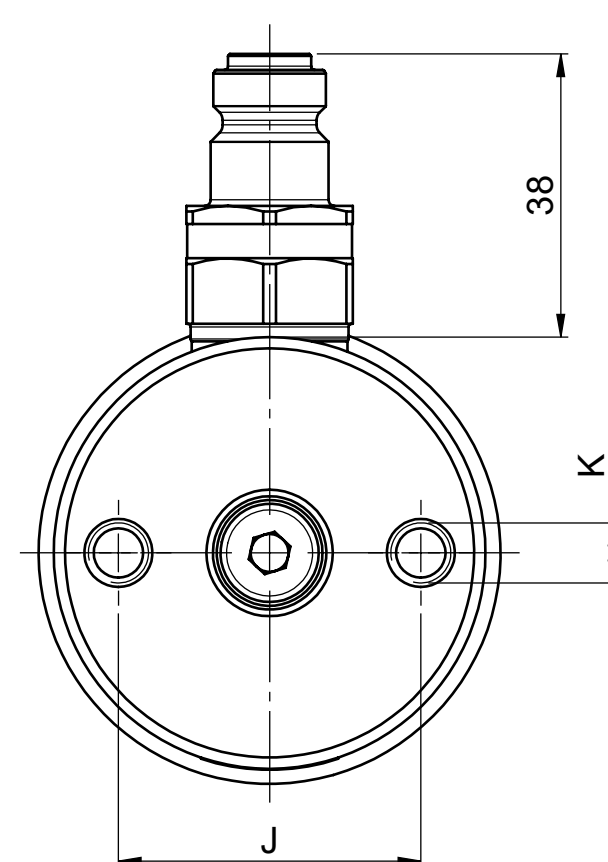


CFC1006P-10010P

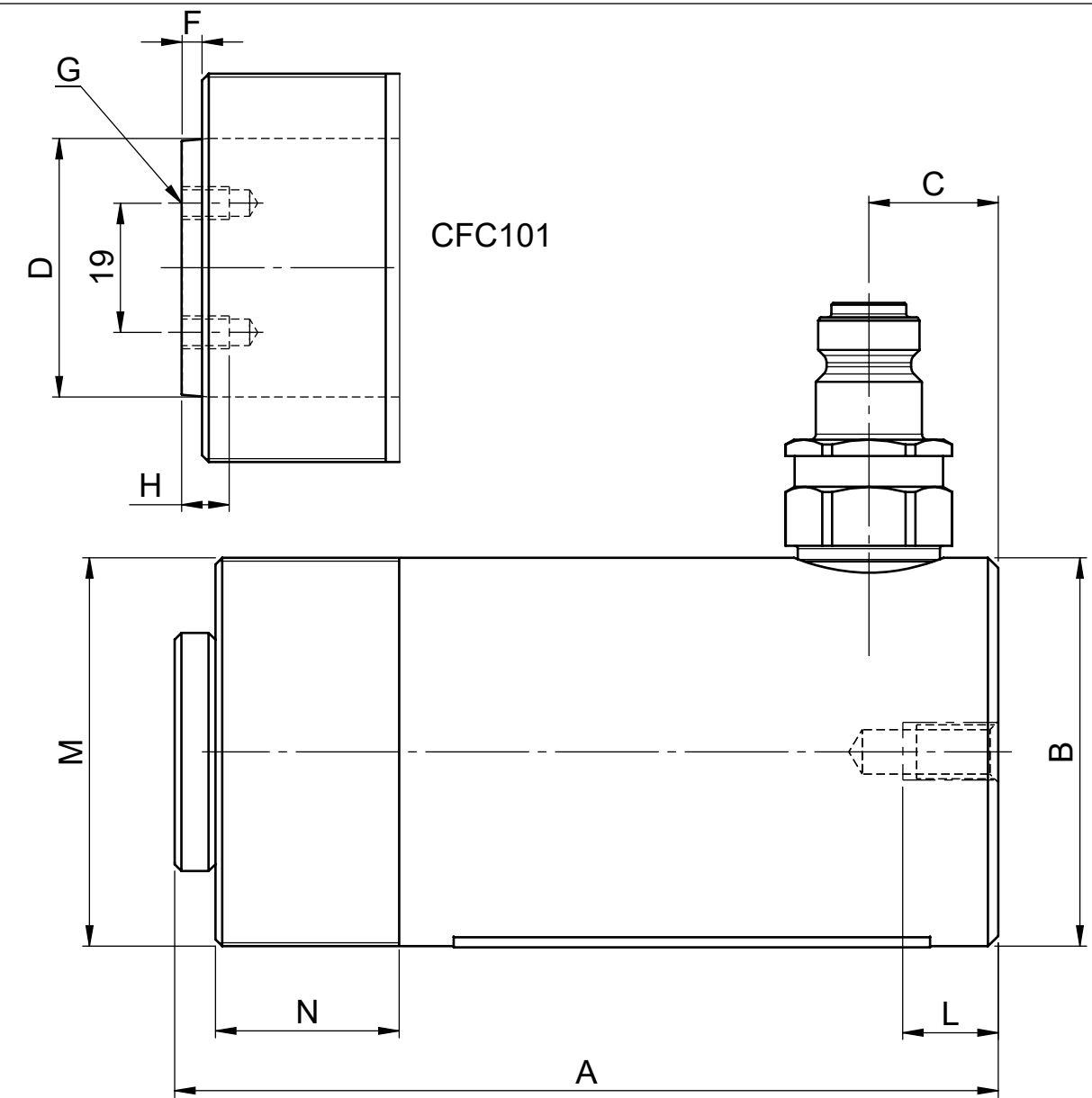
CFC51P - CFC59P
CFC101P - CFC1014P
CFC151P - CFC1517P
CFC251P - CFC2514P
CFC502P - CFC5013P



CFC1006-10010

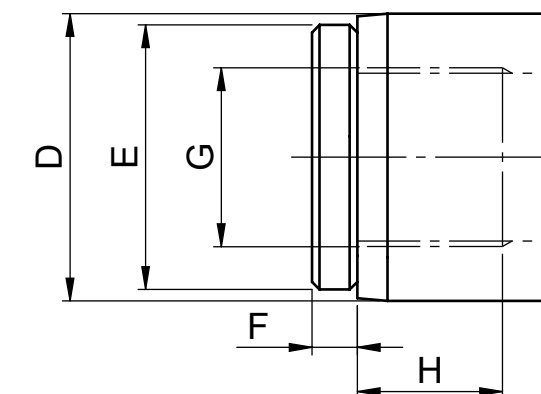


CFC51 - CFC59
CFC101 - CFC1014
CFC151 - CFC1517
CFC251 - CFC2514
CFC502 - CFC5013

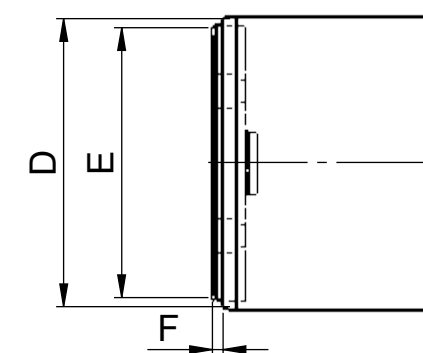


CFC101

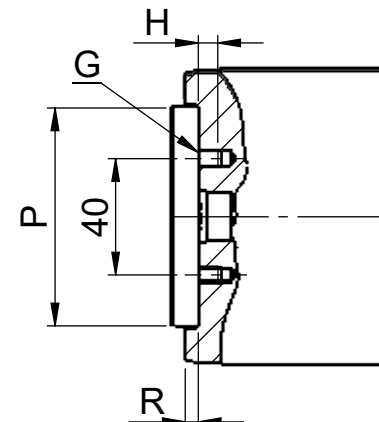
Modell / Model	Max arbetstryck / Max working pressure (MPa)	Kapacitet / Capacity (kN)	Slaglängd / Stroke (mm)	Kolvarean / Piston area (cm²)	Slagvolym / Stroke volume (cm³)	A (mm)	Ø B (mm)	C (mm)	Ø D (mm)	Ø E (mm)	F (mm)	G	H (mm)	J (mm)	K	L (mm)	M	N (mm)	Ø P (mm)	R (mm)	Vikt / Weight (kg)
CFC51	70	49	27	7.1	19	110	38	19	25.4	25	6	3/4" -16 UNF	16	25	1/4" -20 UNC	14	1 1/2" -16 UN	29	---	---	0.8
CFC53	70	49	77	7.1	55	165	38	19	25.4	25	6	3/4" -16 UNF	16	25	1/4" -20 UNC	14	1 1/2" -16 UN	29	---	---	1.2
CFC55	70	49	127	7.1	90	216	38	19	25.4	25	6	3/4" -16 UNF	16	25	1/4" -20 UNC	14	1 1/2" -16 UN	29	---	---	1.5
CFC57	70	49	181	7.1	128	273	38	19	25.4	25	6	3/4" -16 UNF	16	25	1/4" -20 UNC	14	1 1/2" -16 UN	29	---	---	1.9
CFC59	70	49	232	7.1	165	324	38	19	25.4	25	6	3/4" -16 UNF	16	25	1/4" -20 UNC	14	1 1/2" -16 UN	29	---	---	2.2
CFC101	70	111	25	15.9	40	90	57	19	38	35	3	10-24 UN	7	40	5/16" -18 UNC	12	2 1/4" -14 UN	27	---	---	1.5
CFC102	70	111	54	15.9	86	121	57	19	38	35	6	1"-8 UNC	21	40	5/16" -18 UNC	12	2 1/4" -14 UN	27	---	---	2
CFC104	70	111	105	15.9	167	171	57	19	38	35	6	1"-8 UNC	21	40	5/16" -18 UNC	12	2 1/4" -14 UN	27	---	---	2.7
CFC106	70	111	155	15.9	247	247	57	19	38	35	6	1"-8 UNC	22	40	5/16" -18 UNC	12	2 1/4" -14 UN	27	---	---	4
CFC108	70	111	206	15.9	328	298	57	19	38	35	6	1"-8 UNC	22	40	5/16" -18 UNC	12	2 1/4" -14 UN	27	---	---	4.6
CFC1010	70	111	257	15.9	409	349	57	19	38	35	6	1"-8 UNC	22	40	5/16" -18 UNC	12	2 1/4" -14 UN	27	---	---	5.3
CFC1012	70	111	305	15.9	485	400	57	19	38	35	6	1"-8 UNC	22	40	5/16" -18 UNC	12	2 1/4" -14 UN	27	---	---	6
CFC1014	70	111	356	15.9	566	451	57	19	38	35	6	1"-8 UNC	22	40	5/16" -18 UNC	12	2 1/4" -14 UN	27	---	---	6.8
CFC151	70	166	25	23.8	59	124	70	19	48	38	10	1"-8 UNC	17	48	3/8" -16 UNC	13	2 3/4" -16 UN	30	---	---	3
CFC152	70	166	51	23.8	121	149	70	19	48	38	10	1"-8 UNC	22	48	3/8" -16 UNC	13	2 3/4" -16 UN	30	---	---	3.5
CFC154	70	166	101	23.8	240	200	70	19	48	38	10	1"-8 UNC	22	48	3/8" -16 UNC	13	2 3/4" -16 UN	30	---	---	4.5
CFC156	70	166	152	23.8	361	272	70	25	48	38	10	1"-8 UNC	25	48	3/8" -16 UNC	13	2 3/4" -16 UN	30	---	---	6.5
CFC158	70	166	203	23.8	482	322	70	25	48	38	10	1"-8 UNC	25	48	3/8" -16 UNC	13	2 3/4" -16 UN	30	---	---	7.5
CFC1510	70	166	254	23.8	603	373	70	25	48	38	10	1"-8 UNC	25	48	3/8" -16 UNC	13	2 3/4" -16 UN	30	---	---	8.5
CFC1512	70	166	305	23.8	725	424	70	25	48	38	10	1"-8 UNC	25	48	3/8" -16 UNC	13	2 3/4" -16 UN	30	---	---	9.5
CFC1514	70	166	356	23.8	846	475	70	25	48	38	10	1"-8 UNC	25	48	3/8" -16 UNC	13	2 3/4" -16 UN	30	---	---	10.9
CFC1517	70	166	432	23.8	1026	565	70	25	48	38	10	1"-8 UNC	25	48	3/8" -16 UNC	13	2 3/4" -16 UN	30	---	---	13
CFC251	70	232	25	33.2	83	140	85	22	60	50	10	1 1/2" -16 UN	25	59	1/2" -13 UNC	19	3 5/16" -12 UN	49	---	---	5.1
CFC252	70	232	51	33.2	169	165	85	22	60	50	10	1 1/2" -16 UN	25	59	1/2" -13 UNC	19	3 5/16" -12 UN	49	---	---	5.9
CFC254	70	232	101	33.2	335	216	85	22	60	50	10	1 1/2" -16 UN	25	59	1/2" -13 UNC	19	3 5/16" -12 UN	49	---	---	7.7
CFC256	70	232	159	33.2	528	273	85	22	60	50	10	1 1/2" -16 UN	25	59	1/2" -13 UNC	19	3 5/16" -12 UN	49	---	---	9.7
CFC258	70	232	209	33.2	694	324	85	22	60	50	10	1 1/2" -16 UN	25	59	1/2" -13 UNC	19	3 5/16" -12 UN	49	---	---	11.5
CFC2510	70	232	260	33.2	863	375	85	22	60	50	10	1 1/2" -16 UN	25	59	1/2" -13 UNC	19	3 5/16" -12 UN	49	---	---	13.3
CFC2512	70	232	311	33.2	1032	426	85	22	60	50	10	1 1/2" -16 UN	25	59	1/2" -13 UNC	19	3 5/16" -12 UN	49	---	---	15
CFC2514	70	232	362	33.2	1201	476	85	22	60	50	10	1 1/2" -16 UN	25	59	1/2" -13 UNC	19	3 5/16" -12 UN	49	---	---	17
CFC502	70	496	53	70.9	376	176	127	33	80	75	3	M6	8	95	M12	19	5" -12 UN	55	76	6.5	16
CFC504	70	496	104	70.9	737	227	127	33	80	75	3	M6	8	95	M12	19	5" -12 UN	55	76	6.5	19
CFC506	70	496	159	70.9	1127	282	127	33	80	75	3	M6	8	95	M12	19	5" -12 UN	55	76	6.5	23
CFC5013	70	496	337	70.9	2389	460	127	33	80	75	3	M6	8	95	M12	19	5" -12 UN	55	76	6.5	35
CFC756	70	727	155	103.9	1610	282	146	29	100	75	5	M6	8	---	---	---	5 3/4" -12 UN	44	77	4.5	30
CFC7513	70	727	333	103.9	3459	492	146	29	100	75	5	M6	8	---	---	---	5 3/4" -12 UN	44	77	4.5	48
CFC1006	70	929	168	132.7	2230	359	175	41	100	75	5	M6	8	140	3/4" -10 UNC	24	6 7/8" -12 UN	54	77	4.5	54
CFC10010	70	929	260	132.7	3451	450	175	41	100	75	5	M6	8	140	3/4" -10 UNC	24	6 7/8" -12 UN	54	77	4.5	65



CFC51 - CFC59
CFC102 - CFC1014
CFC151 - CFC1517
CFC251 - CFC2514



CFC502 - CFC5013
CFC756 - CFC7513
CFC1006 - CFC10010



Material	Blank, dimension	Heat treatment	Surface treatment
Permissible deviations for dimensions without indication of tolerances	Machined parts acc.SS-ISO-2768-1	Castings acc.SS-ISO-8062	Fuse welded constr. acc.SS-EN ISO 13920
Surface roughness unless specified	Ra µm		
Designed by	GB1	Date	2017-01-24
Prod. appr.	i1	Scale	1:1
		Måttitning Dimensional drawing	
CFC-cylindrar		CFC-cylinders	
B-40341		Replaced by	

DENNA RITNING ÄR REHOBOT ÅRS EGENDOM. SKYDDAD ENLIGT GÄLLANDE LAG.
 THIS DRAWING IS THE PROPERTY OF REHOBOT AB. PROTECTED BY PREVAILING LAW.

Issue	Change	Position	Date	Sign.
4	Omröad		06-01-09	MN