

KIT CONSISTS OF:

- PC75-40R, cutting tool
- Hand pump, with swivel coupling
- 2 m hose with quick couplings
- Couplings for convenience
- Carrying case

FEATURES OF THE PC75-40R CUTTING TOOL

- Quick and easy to use
- 40 mm opening
- 76 kN max cutting force
- Spring return
- Working pressure 80 MPa
- Works in any position, horizontal or vertical
- Cutting head rotates freely 355°
- Swivel coupling for greater flexibility



Hydraulic cutting tool kit **EHR102A - PC75-40R**

The PC75-40R provides a quick, simple solution for hand operating cutting for rescue, police and even industrial applications

■ Information



The hydraulic cutting tool PC75 is a hand operated cutting tool with spring return for cutting pedals in crashed vehicles, for cutting rebar, padlocks, aircraft, train seats and even common tool for cutting steel pipes etc.

■ Functionality



The cutting performance of the hydraulic cutting tool PC75 is to cut thru 11SMnPb30+C steel with hardness of 170 HB and a diameter of 18 mm.

■ Usability

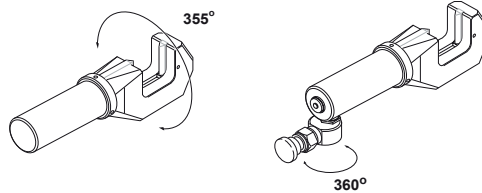


Fields of use where the PC75 is applicable may include:

- Rescue services
- Civil defence
- Emergency aid operations
- Scraping and demolition
- Industrial applications

PC75-40R - PERFORMANCE

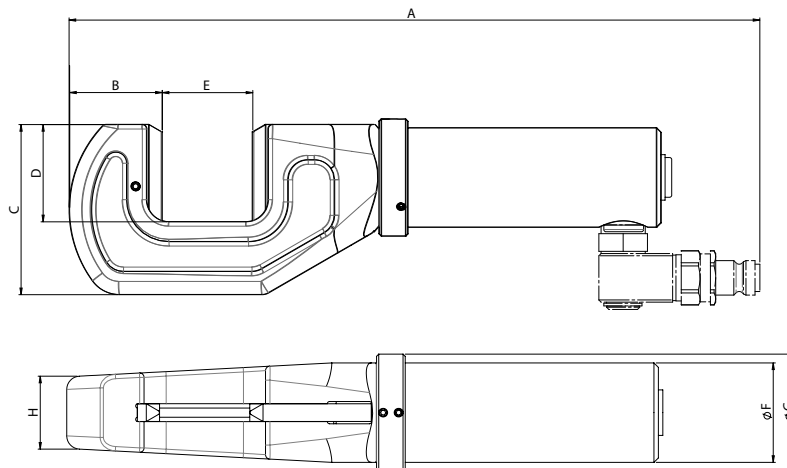
Product	Capacity		Max working pressure		Max opening		Stroke volume		Connection	Weight	
	kN	ton	MPa	psi	mm	inch	cm ³	in ³		kg	lbs
PC75-40R	76	7.7	80	11603	40	1.6	38,5	2.3	Swivel coupling	3,5	7.7



The cutting head rotates freely through 355° PC75-40R. The swivel coupling is capable of rotating 360° even under pressure which guarantees highest possible flexibility when handling the tool.

PC75-40R - MEASUREMENTS

Product	A		B		C		D		E		F		G		H	
	mm	inch	mm	inch	mm	inch	mm	inch	mm	inch	mm	inch	mm	inch	mm	inch
PC75-40R	313	12.3	42	1.7	77	3.0	44	1.7	40	1.6	45	1.8	53	2.1	33	1.3



PUMP

Hand pump - PHS80-300W



Working pressure: 80 MPa, 800 bar, 11600 psi

Effective oil volume: 300 cm³, 18.3 in³

Capacity high pressure: 1 cm³/stroke, 0.1 in³/stroke

Capacity low pressure: 20 cm³/stroke, 1.2 in³/stroke

Pump force: 400 N

Weight: 4,8 kg, 10.6 lbs

In EHR102A, equipped with swivel ASE10 and female quick coupling AQI8-LD



ORDERING INFORMATION

Designation	EHR102A - complete tool kit				
Part number	51150				
Designation	PC75-40R - Cutting tool	PHS80-300W - Hand pump	Swivel coupling ASE10	Quick coupling female AQI8-LD	Quick coupling male AQU8-D
Part number	38746	44881	37588	45950	45953