



Eskilstuna 2017-12-20 GB Document number: 65665 v1.0 We reserve the right to change product-related information and technical specifications without prior notice.

CONTENT

Page	Content
1	Applications
2	Example of applications
3	Universal lifting system HTJ-series
4	Dimensions HTJ1200-2
5-8	DT12 - Adaptor kit
9	General information



APPLICATIONS

■ The universal handling system

The modular construction methods now used in the automotive industry are placing new demands on workshop equipment. Vehicle parts such as motor blocks or rear axles have to be dismantled and mounted from below. With the HTJ1200 system, these heavy lifts can be done in an effective and controlled way.

■ It lifts up to 545 kg

The system is capable for removing and fitting complete engine assemblies, rear axles, gearboxes, fuel tanks, exhaust systems and much more. The HTJ1200 universal handling system comes with enough power for all kinds of jobs.

■ It saves time and money

Work can be carried out by one person instead of several. Furthermore, additional repair jobs can be carried out directly on the working platform. Therefore, the system reduces the total working time for complete repairs.

■ Pneumatic and hydraulic operation

Lifting is done pneumatically and hydraulically. With pneumatics the load can be raised or lowered quickly. The hydraulic lifting gives the operator higher control and precision.

REHOBOT's universal handling system is patented. The system is designed to meet today's and tomorrow's needs.



EXAMPLE OF APPLICATIONS

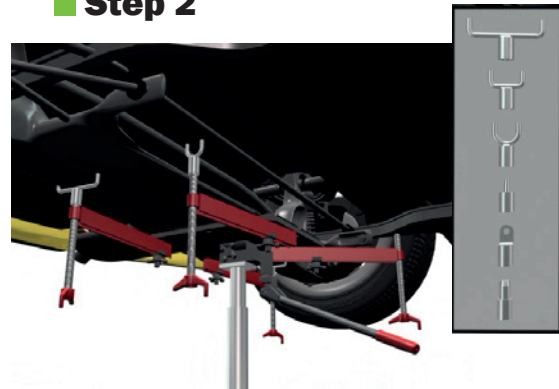


■ Step 1



Raise the HTJ1200 close to the lifting object by means of the pneumatic lift. To adjust the HTJ1200 with greater precision, use the hydraulic lift.

■ Step 2



Choose proper adapters for the lifting object and assemble the adapters on the adjustable arms. The arms can be adjusted in height, length and rotation.

■ Step 3



Start lowering the object by using the hydraulic lift, which gives you precise control of the operation. Then, lower the lifting object by pressing the foot pedal on the HTJ1200.

■ Working directly on the platform



In most situations, you are now able to carry out the necessary service on the vehicle part directly on the platform. In other words, there is no need to go to a work bench or alike.

Secure the lift by using the two tie down straps that are part of the adapter kit DT12 and carry on with service.

UNIVERSAL LIFTING SYSTEM HTJ-SERIES

Information



- Long stroke 945 mm (37.2 in)
- Low weight: 76 kg (167.6 lbs)
- Lifts up to 545 kg (1201.5 lbs)
- Work can be carried out by one person
- Complete lifting system with an extensive collection of adapters

Functionality



- Lifting is done pneumatically and hydraulically
- Required air pressure 0,8 MPa (116 psi)
- Equipped with 4 swiveling wheels, two of them lockable
- Can be serving directly as a workplace

Usability



- Universal, simple and safe
- Dismount
 - Engines/gearboxes
 - Rear suspension
 - Powertrain assembly (complete with subframes)
 - Fuel tanks
 - Powertrains
 - Complete exhaust systems

HTJ1200-2 Universal

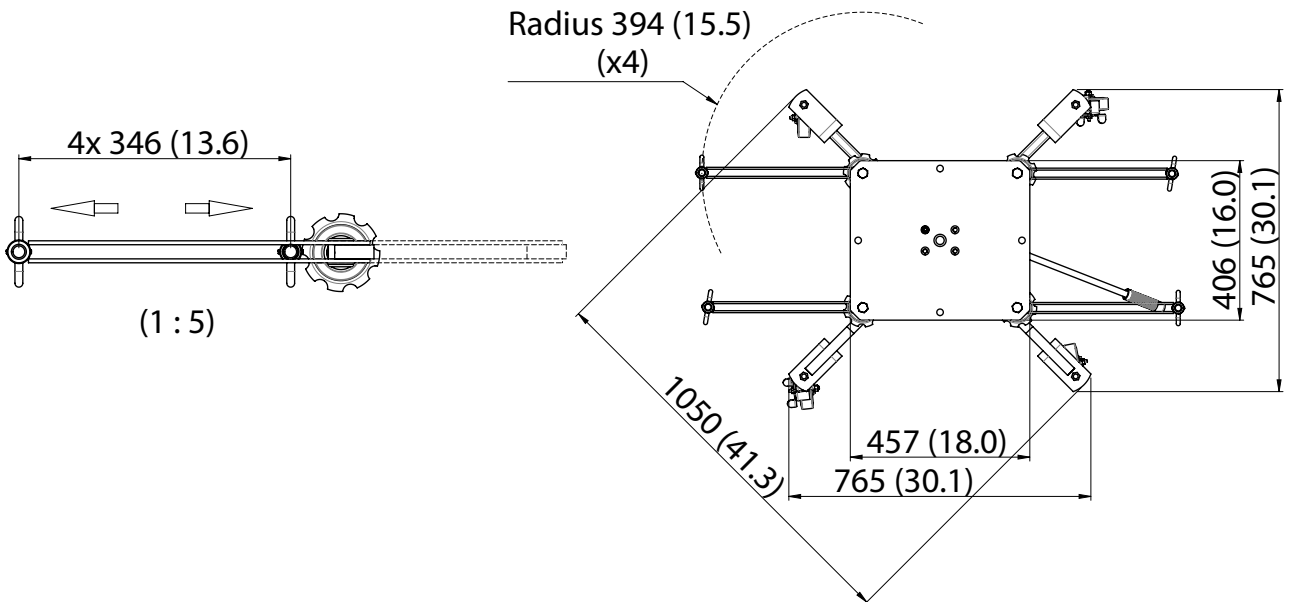
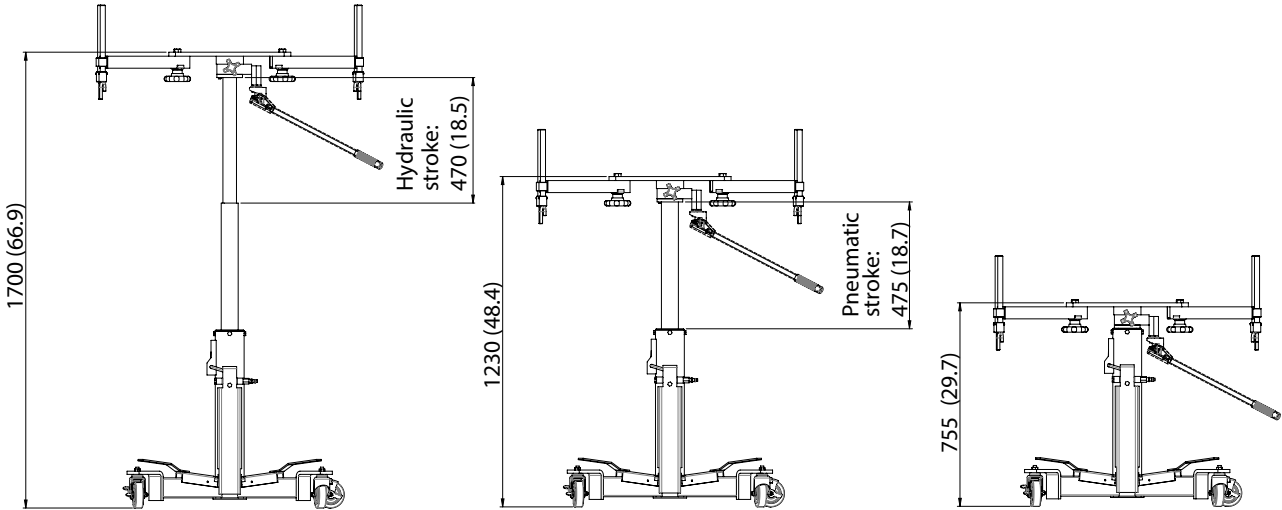
Part no:	Capacity kg (lbs)	Weight kg (lbs)	Height min/max mm (in)	Pneum. stroke mm (in)	Hydr. stroke mm (in)
43447	545 (1201.5)	76 (167.6)	755/1700 (29.7/66.9)	472 (18.6)	473 (18.6)



Included in the product:

- Adaptor kit DT12, see page 5-8 for more information.

DIMENSIONS HTJ1200-2

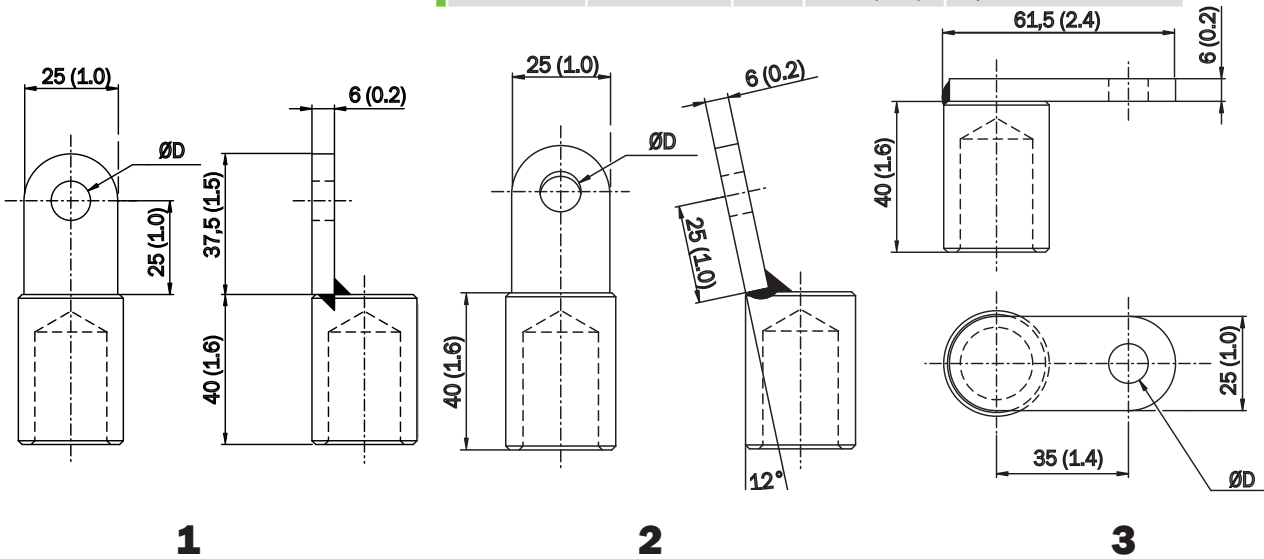


DT12 - ADAPTOR KIT

EAR 101 - 104



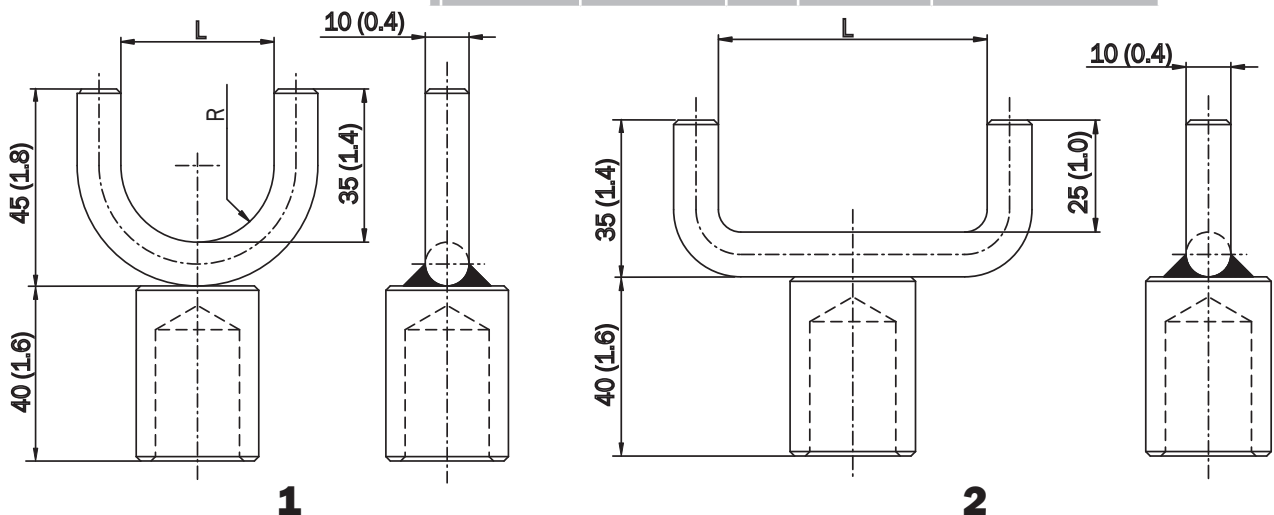
Part no:	Content	Type	Ø D mm (in)	Recommended quantity/set
42993	EAR 101	1	10,5 (0.4)	2 pcs
42998	EAR 102	1	12,5 (0.5)	2 pcs
42994	EAR 103	2	10,5 (0.4)	2 pcs
42995	EAR 104	3	10.5 (0.4)	2 pcs



FORK 501-506



Part no:	Content	Type	Ø L mm (in)	Recommended quantity/set
42996	Fork 501	1	35 (1.4)	2 pcs
42997	Fork 502	2	60 (2.4)	2 pcs
43200	Fork 503	2	80 (3.1)	2 pcs
43392	Fork 504	2	50 (2.0)	2 pcs
43393	Fork 505	2	100 (3.9)	2 pcs
43394	Fork 506	2	120 (4.7)	2 pcs

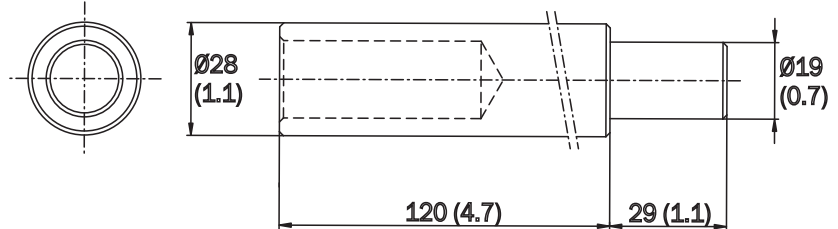


DT12 - ADAPTOR KIT

EXTENSION 901



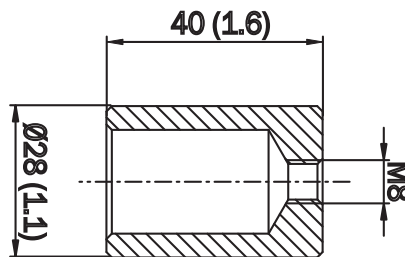
Part no:	Content	Recommended quantity/set
43201	Extension 901	2 pcs



WELDING ADAPTER 902



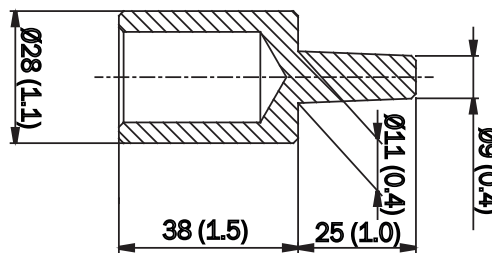
Part no:	Content	Recommended quantity/set
42999	Welding adapter 902	2 pcs



PIN 301



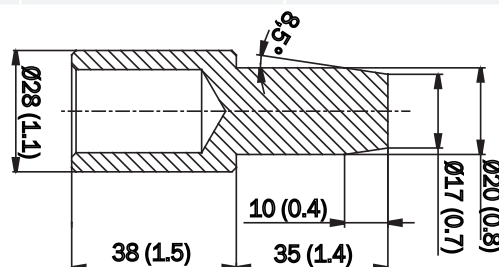
Part no:	Content	Recommended quantity/set
42992	PIN 301	2 pcs



PIN 302



Part no:	Content	Recommended quantity/set
42991	PIN 302	2 pcs

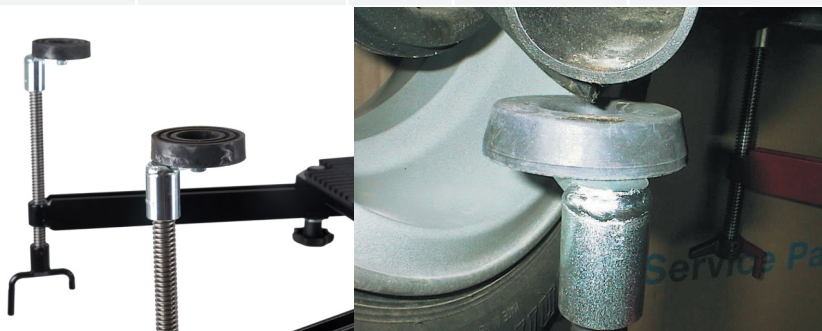


DT12 - ADAPTOR KIT

SUPPORT FOOT 903



Part no:	Content	Thread	Dimensions (mm)	Recommended quantity/set
43202	Support foot 903	M6	Ø76,5	3 pcs



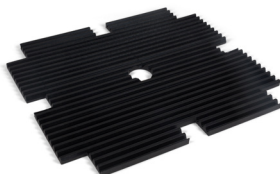
Support foot 903 + Ear 104

SUPPORT 904



Part no:	Content	Recommended quantity/set
43203	Support 904	8 pcs

RUBBER PLATE 907



Part no:	Content	Recommended quantity/set
43207	Rubber plate 907	1 pcs

TIE DOWN STRAP 908



Part no:	Content	Recommended quantity/set	Data
43208	Chain 912	2 pcs	Length: 0,4m + 3,6m (15.7 + 141.7) Width: 25mm (1.0)

BOX 910



Part no:	Content	Recommended quantity/set
43223	Box 910	1 pcs

DT12 - ADAPTOR KIT

CHAIN 912



Part no:	Content	Recommended quantity/set	Data
43444	Chain 912	1 pcs	Length: 0,5m (19.7)



DT7 ADAPTER



Part no:	Content	Recommended quantity/set
39422	DT7 adapter	1 pcs



DT 13 ADAPTER

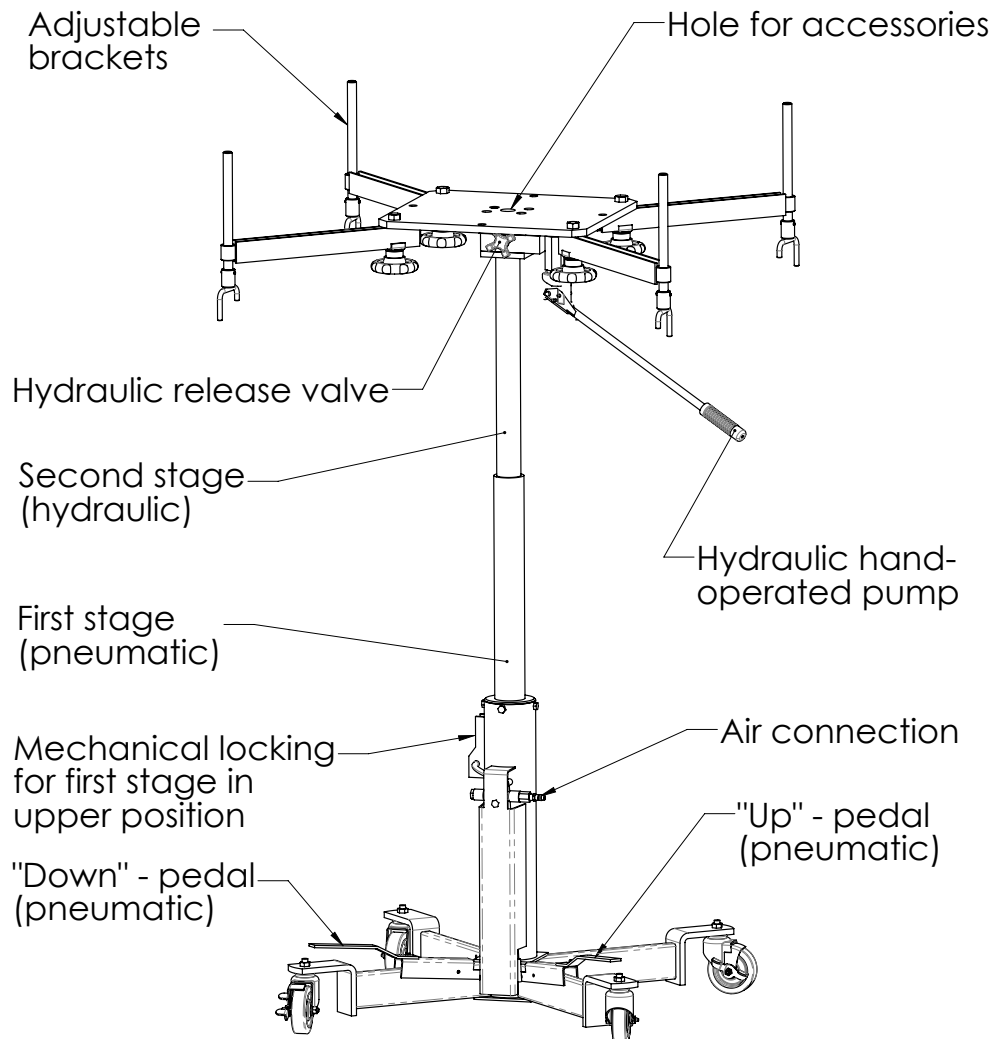


Part no:	Content	Recommended quantity/set
43445	DT13 adapter	1 pcs



DT7 adapter + DT13 adapter + preferred accessory

GENERAL INFORMATION OVERALL OPERATION



Remember!

- Place the jack on a flat surface under the lifting object as close to its centre of gravity (balance point) as possible.
- Connect the compressed air supply. To ensure reliable operation and long life, use clean compressed air with a water trap and mist lubrication.
- Adjust the lifting plate and adapters (if used) to provide the best possible contact with the lifting object.

Important!

Using a lifting system is not a completely harmless operation.
Always work with great care.

We reserve the right to introduce changes to our product range and/or designs without prior notice.